



Collection Signature
Femmes

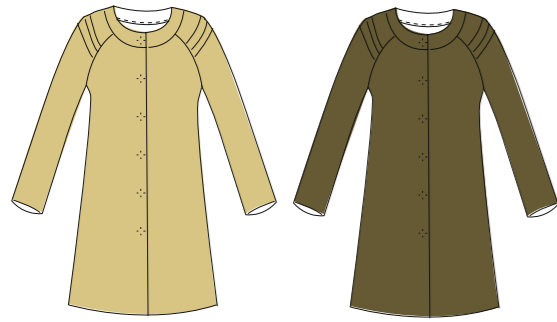
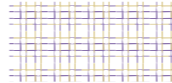
Mini Fans
pr 04



Passi Berry
pr 05



Passi Shadow
pr 06



Manteau "Kalahari" Réf. 339
coton structuré



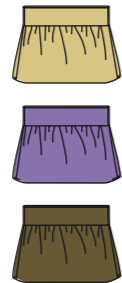
Veste "Java" - Réf. 338
coton structuré



Chemise "Malacca" Réf. 341
voile



Top cache coeur "Kochi" Réf. 340
coton structuré



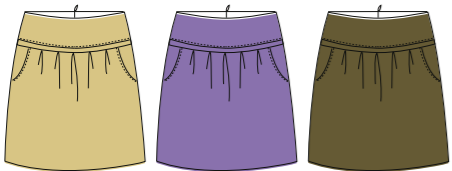
Sac "Aruba" Réf. 334
coton structuré



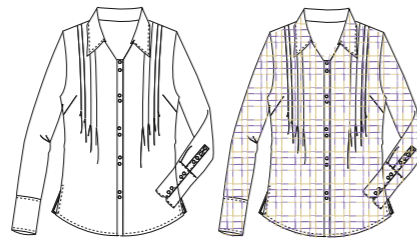
Robe "Calcutta" Réf. 336
coton structuré



Robe "Bangkok" Réf. 335
voile



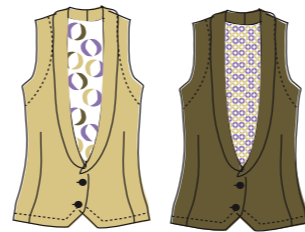
Jupe "Galapagos" Réf. 337
coton structuré



Chemise "Bianca" Réf. 315
Voile



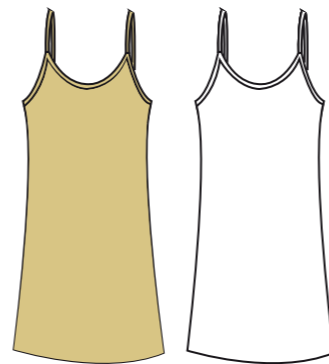
Sac "Mangalore" Réf. 342
coton structuré



Gilet "Pondicherry" Réf. 344
sergé de coton



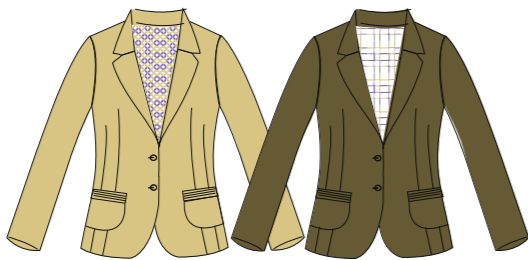
Blouse "Tamatave" Réf. 347
voile



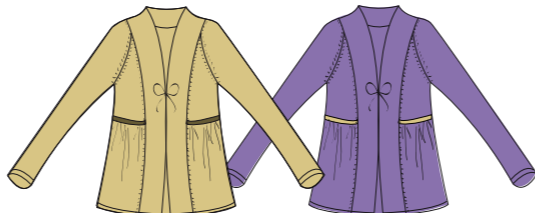
Nuisette "Goa" Réf. 348
voile



Trench "Cassiopea" - Réf. 325
canevas



Blazer "Penang" Réf. 343
sergé de coton



Cardigan "Luz" Réf. 405
tricot coton



Pantalon "Jamaica" Réf. 355
sergé de coton

Pantalon "Tahiti" Réf. 346
sergé de coton



Jupe "Quito" Réf. 345
sergé de coton



Cardigan "Luna" Réf. 404
tricot coton



Top "Zoe" Réf. 403
tricot coton



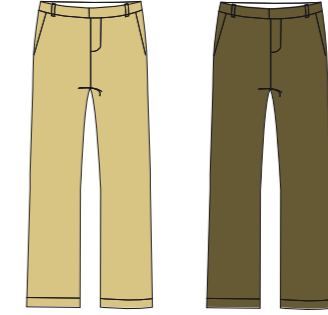
Veste "Dakar" Réf. 350
sergé de coton



Veste "Rio" Réf. 354
sergé de coton



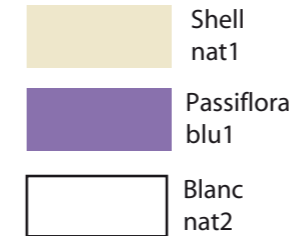
Echarpe "Darwin" Réf. 351
voile



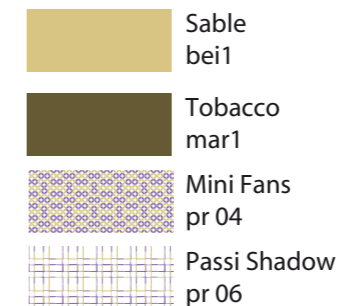
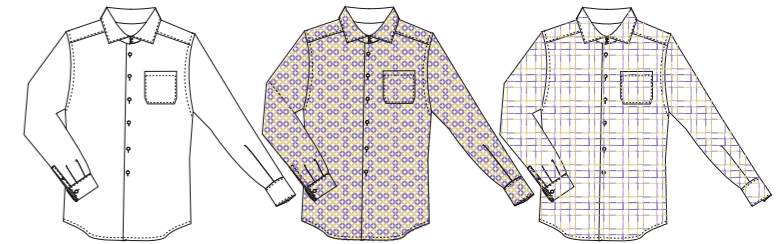
Pantalon "Agadir" Réf. 353
sergé de coton



Gilet "Acapulco" Réf. 349
sergé de coton



Chemise "Sydney" Réf. 352
popeline



Chemise ajustée "Soul" Réf. 324
voile



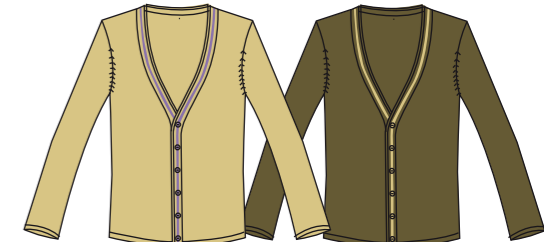
Chemise ajustée "Santiago" Réf. 356
voile



Boutons Manchettes
"Zébu" Réf. 726
corne



pullover "Ziggy" Réf. 401
tricot coton



cardigan "Zadig" 402
tricot coton