

ETHOS Collection homme
COTON BIO



T-shirt homme "Jujube" Réf. 234 jersey



Polo "Pindo" Réf. 239 piqué de coton

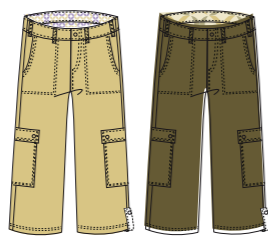


T-shirt "Joran" Réf. 205 jersey

-  Sienna ora1
-  Turmeric jau1
-  Sable bei1
-  Tobacco mar1
-  Multi Berry pr21
-  Mini Fan pr04
-  Pale Berry pr22



Chemise sport "Jojoba" Réf. 233 sergé de coton



Bermuda "Tucuma" Réf. 248 sergé de coton

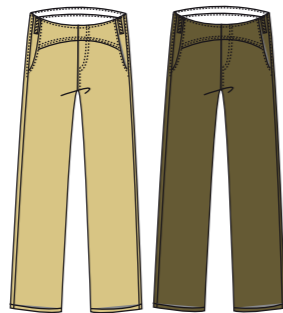


Echarpe "Boa" Réf. 223 jersey



petite sacoche "Zarig" Réf. 249 canevas

sacoche ordinateur "Topo" Réf. 247 canevas



pantalon "Piper" Réf. 240 canevas

ETHOS Collection Botanic Impressions
BOTANIC IMPRESSIONS
Hommes



T-shirt "Tualang" Réf. 164 voile










T-shirt "Gingko" Réf. 119 jersey

Echarpe "Durian" Réf. 152 voile



Chemise "Baobab" Réf. 148 voile

-  Sand Berry pr15
-  Honey Berry pr 01
-  Honey Splash pr 02
-  Sand Mosaïque pr 16
-  Sand Shadow pr 18
-  Shell Shadow pr20
-  Sand Reflection pr 17

ETHOS Accessoires Raphia et Hipi Hapa Homme
Accessoires



Ceinture Homme "Pili" Réf. 602 hipi hapa



Chapeau Homme "Cardamome" Réf. 601 hipi hapa



Tongues Homme "Kiwano" Réf. 719 Raphia

ETHOS Collection Signature
SIGNATURE
Hommes

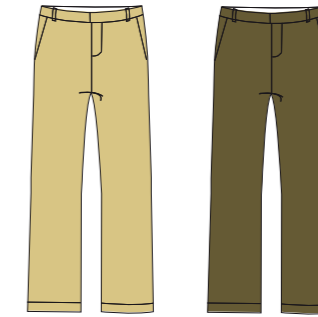


Veste "Dakar" Réf. 350 sergé de coton

Veste "Rio" Réf. 354 sergé de coton



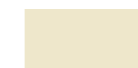







Echarpe "Darwin" Réf. 351 voile

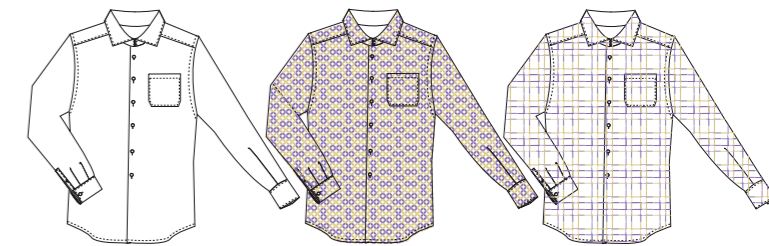


Pantalon "Agadir" Réf. 353 sergé de coton



Gilet "Acapulco" Réf. 349 sergé de coton

-  Shell nat1
-  Passiflora blu1
-  Blanc nat2
-  Sable bei1
-  Tobacco mar1
-  Mini Fans pr 04
-  Passi Shadow pr 06
-  Pale Berry pr 22



Chemise "Sydney" Réf. 352 popeline



Chemise ajustée "Soul" Réf. 324 voile



Chemise ajustée "Santiago" Réf. 356 voile



Boutons Manchettes "Zébu" Réf. 726 corne



pullover "Ziggy" Réf. 401 tricot coton



cardigan "Zadig" 402 tricot coton