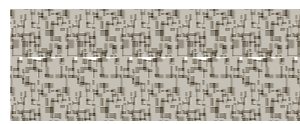




Slate MelangeKM04



Perle MelangeKM03



WineROU3



HoneysuckleROS1



MidnightBLU2



CamelBEI4



ChantillyNAT1



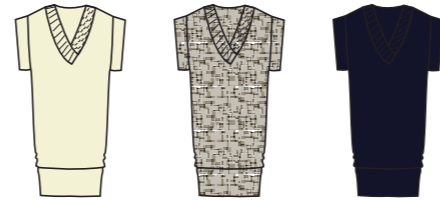
TilleuIVER2

HIVER/WINTER 2011-12

Robes/Dresses



"DULCE" Ref. 511  
Col amovible



Pull long "KATIA" Ref.515  
Fil épais/Thick yarn

Pullover



"CARINA" Ref. 509



"SERENA" Ref. 522



"JOSEFA" Ref. 514  
Fil épais/Thick yarn

Gilets/Cardigans



"EVITA" Ref. 512



"MIRA" Ref. 517  
Fil épais/Thick yarn



"CUMBIA" Ref.572  
Fil épais/Thick yarn

Accessoires



Collier/ceinture "FINA" Ref.513  
Fil épais/Thick yarn



ear warmer "BANDERA" Ref.508  
Fil épais/Thick yarn



bonnet "ANGELA" Ref. 506



mitaines "ANITA" Ref. 507



"AMATISTA" Ref. 502



bonnet tricot main "AMA" Ref.505  
Fil épais/Thick yarn



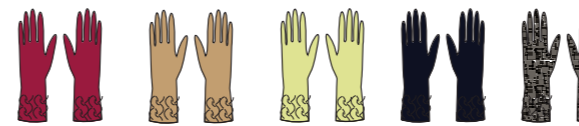
mitaines "SAFIRA" Ref. 521  
Fil épais/Thick yarn



mitaines "AGATA" Ref. 501  
Fil épais/Thick yarn



"TARA" Ref. 523  
Fil épais/Thick yarn



"TORINA" Ref.524  
Fil épais/Thick yarn



women's scarf "AMBROSIA" Ref. 504  
Fil épais/Thick yarn

Collections Homme/ Men's collection



Pull unisexe "OPALA" Ref. 519



Gilet "TRINITAS" Ref. 525  
Fil épais/Thick yarn



men's hat "AMBAR" Ref. 503  
Fil épais/Thick yarn



men's gloves "ONIX" Ref. 518  
Fil épais/Thick yarn



men's scarf "CUARZO" Ref. 510  
Fil épais/Thick yarn